



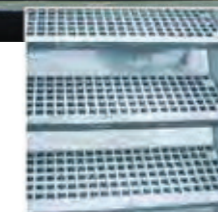
**Tel:** +971 4 885 1976  
**Fax:** +971 4 885 1977



## FIBERGLASS MANHOLE COVERS



Al Mustaqbal Fiberglass Ind. LLC  
P.O. Box 31804  
Emirates Industrial Area,  
Sharjah, UAE



# AREAS OF APPLICATION

## Recreational Water park & landscaping



GRP manhole cover Class C 250 - BS EN 124



GRP Manhole cover Class C 250 - BS EN124



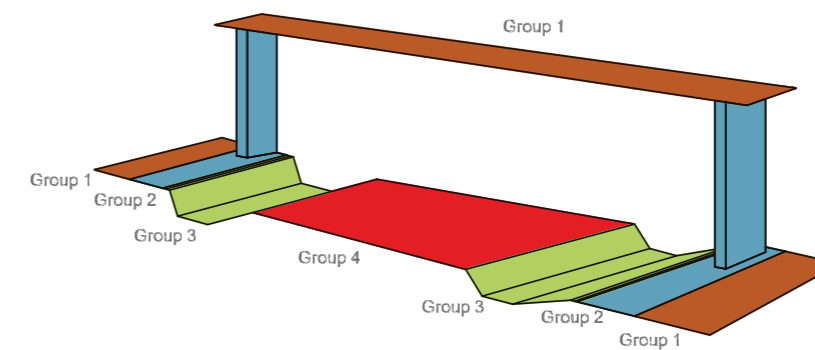
GRP Manhole cover Class A15 - BS EN124



# MANHOLE COVER SYSTEM

Our manhole covers have been designed and produced to replace the traditional Cast iron / Ductile iron covers, Aluminum and GI chequered plate covers. We produce different types of covers for various applications, from light duty sealed covers to heavy duty covers which meets the requirement of BS EN 124 -1994 and EN 20105-A03: 100.

**Our covers are made 100 % from composite material.**



**A15 Group 1**  
Pedestrian and pedal cyclist areas only.

**B125 Group 2**  
Footways, Pedestrian areas, car parks and parking decks.

**C250 Group 3**  
Gully tops installed in kerbside channels of roads which when measured from kerb edge extend to a maximum of 0.5m into the carriageway and a maximum of 0.2m into footway.

**D400 Group 4**  
Carriageways ( including pedestrian streets ), hardshoulders and parking areas for all types of road vehicles.

## Advantages of our covers :

- Long service life
- Do not corrode
- Anti-slip surface
- Fire retardant if required
- UV resistant
- Free maintenance , no painting is required
- High strength / weight ratio
- Easily replaceable
- Can be sealed type preventing water, sand from entering the manhole
- Do not require internal sealing tray
- Can be designed with lock system
- Can be easily lifted by one person

\* Many designs can be provided upon client request to suit the application and the project requirement

